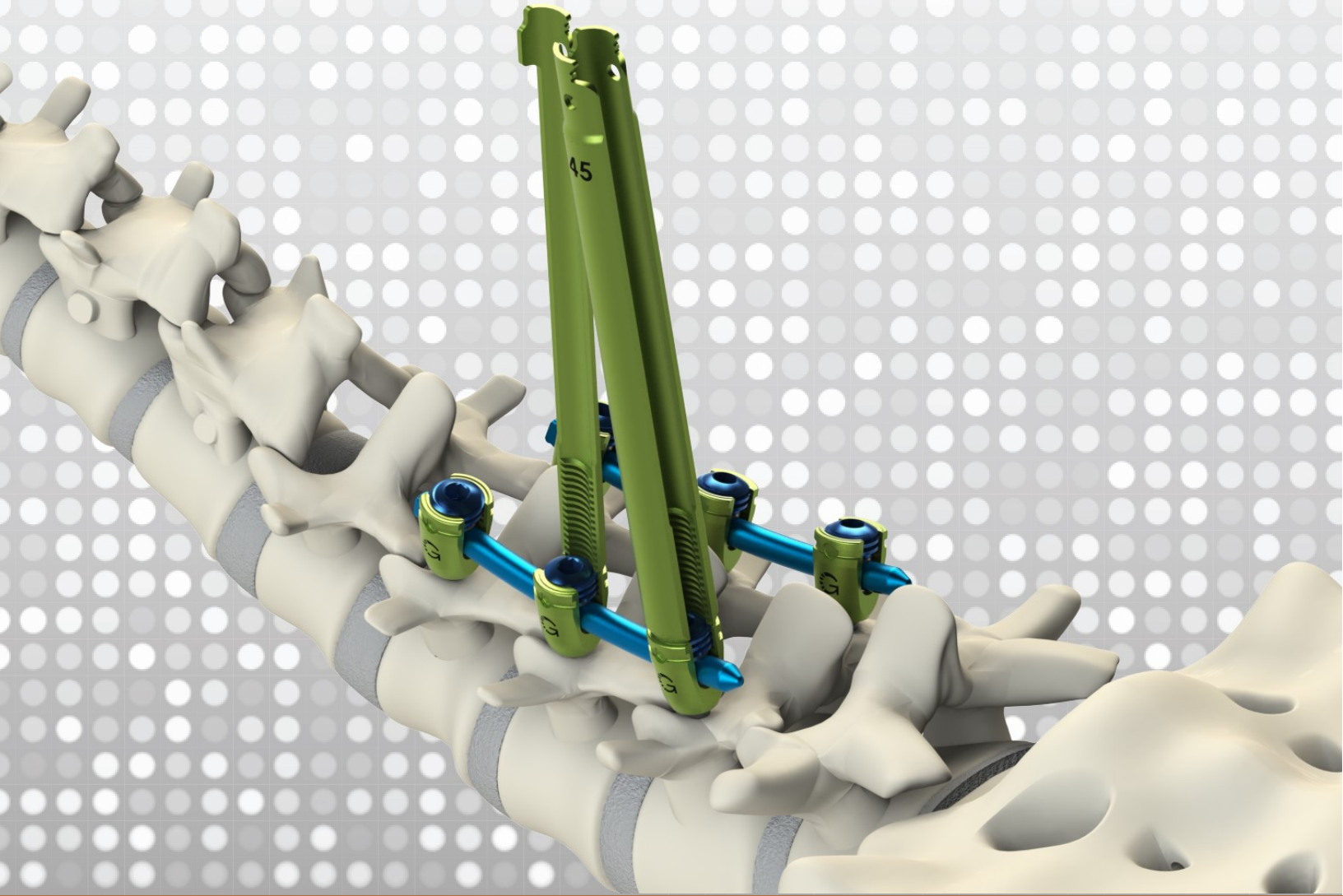


# Genesys spine®



TiLock XT™ Minimally Invasive Pedicle Screw System

### One Piece Tower

Robust 120mm tower allows for a variety of patient profiles.



### 20mm Reduction

Threaded reduction built into the tower. Inverted box threads reduce cross threading and occurrences of tulip splaying.

### Polyaxial Head

60° degrees of conical friction head rotation.

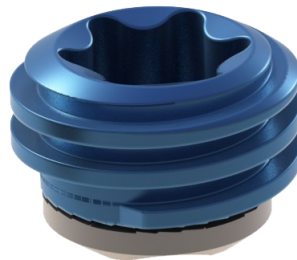
### Unique Cannulated Thread

Self tapping and double-lead thread pitch promote rapid screw insertion.

### TiLock OAI

Proprietary opposing angle interface (OAI) set cap. The lock system reduces rod slippage as well as incidences of set cap back-out.

The Torx head provides a quick and reliable connection.



### Screw Dimensions

Diameters    Lengths

<b>4.8mm</b>	25, 30, 35, 40, 45, 50, 55, 60mm
<b>5.5mm</b>	25, 30, 35, 40, 45, 50, 55, 60mm
<b>6.5mm</b>	25, 30, 35, 40, 45, 50, 55, 60mm
<b>7.5mm</b>	25, 30, 35, 40, 45, 50, 55, 60mm
<b>8.5mm</b>	25, 30, 35, 40, 45, 50, 55, 60, 70, 80, 90, 100mm

### Connection Ring

Simply remove ring to allow for multiple MIS techniques or final implantation.



### Screw Offering

Diameter specific, color coded tulips with clearly labeled screw length.

### Recessed Sharps

Patented recessed break-off feature removes sharps for safe handling.



### Break Away Towers

Easily and safely break away towers for final tulip profile.

### Features

- Diameter specific, color-coded, polyaxial screws.
- Pre-bent, pre-cut Ti Alloy rods minimize rod cutting and contouring.

Refer to the product insert for detailed indications, contraindications, warnings, precautions, and possible adverse effects.

To obtain labeling limitations, surgical technique manuals, and/ or more information regarding Genesys products, contact your local sales representative or Genesys customer service at [info@genesyspine.com](mailto:info@genesyspine.com).