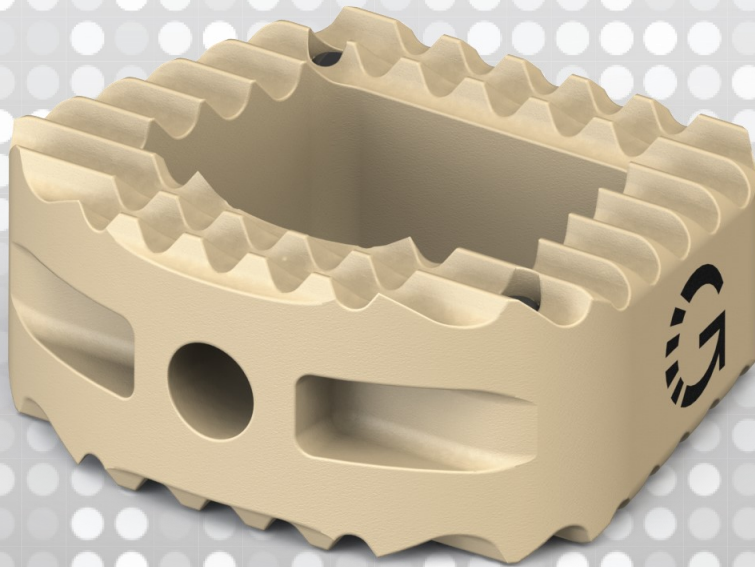
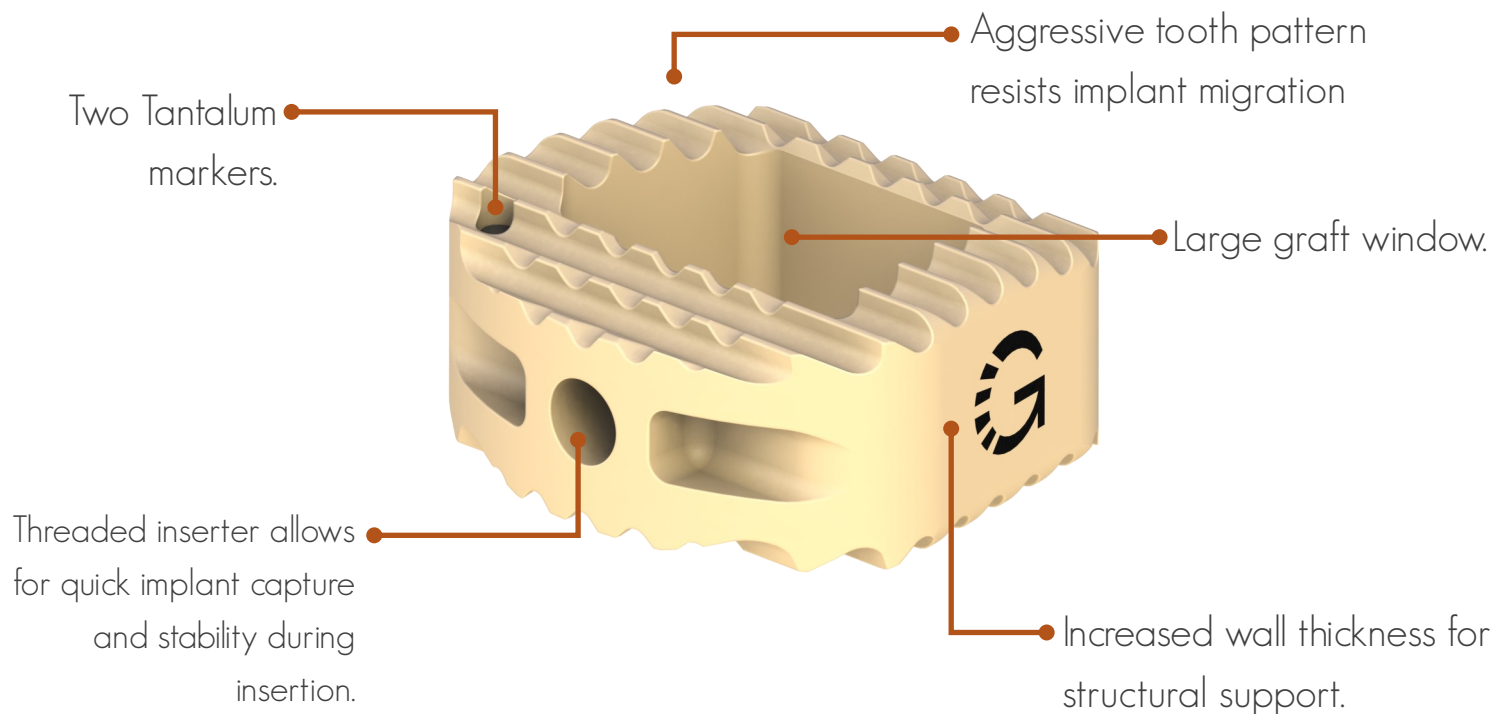


Genesys spine[®]



Apache[®] Cervical Interbody System

The Apache® Cervical Interbody System consists of implants made from PEEK Optima® along with precision instrumentation to provide for efficient interbody placement during ACDF procedures. The interbodies feature a large graft window and contain a pair of Tantalum markers. These markers are placed on opposite corners of the interbody to provide for easy identification of the implant's orientation.



CERVICAL INTERBODIES

- Offered in Small (12mm x 14mm) and Large (15mm x 17mm).
- Available in 7° Lordotic or Parallel configurations.
- Sizes range from 5mm to 12mm in 1mm increments.
- Alternate 5° Lordotic or Convex configurations available upon request.



Convex



Parallel



Lordotic

Refer to the product insert for detailed indications, contraindications, warnings, precautions, and possible adverse effects.

To obtain labeling limitations, surgical technique manuals, and/or more information regarding Genesys products, contact your local sales representative or Genesys customer service at info@genesyspine.com.